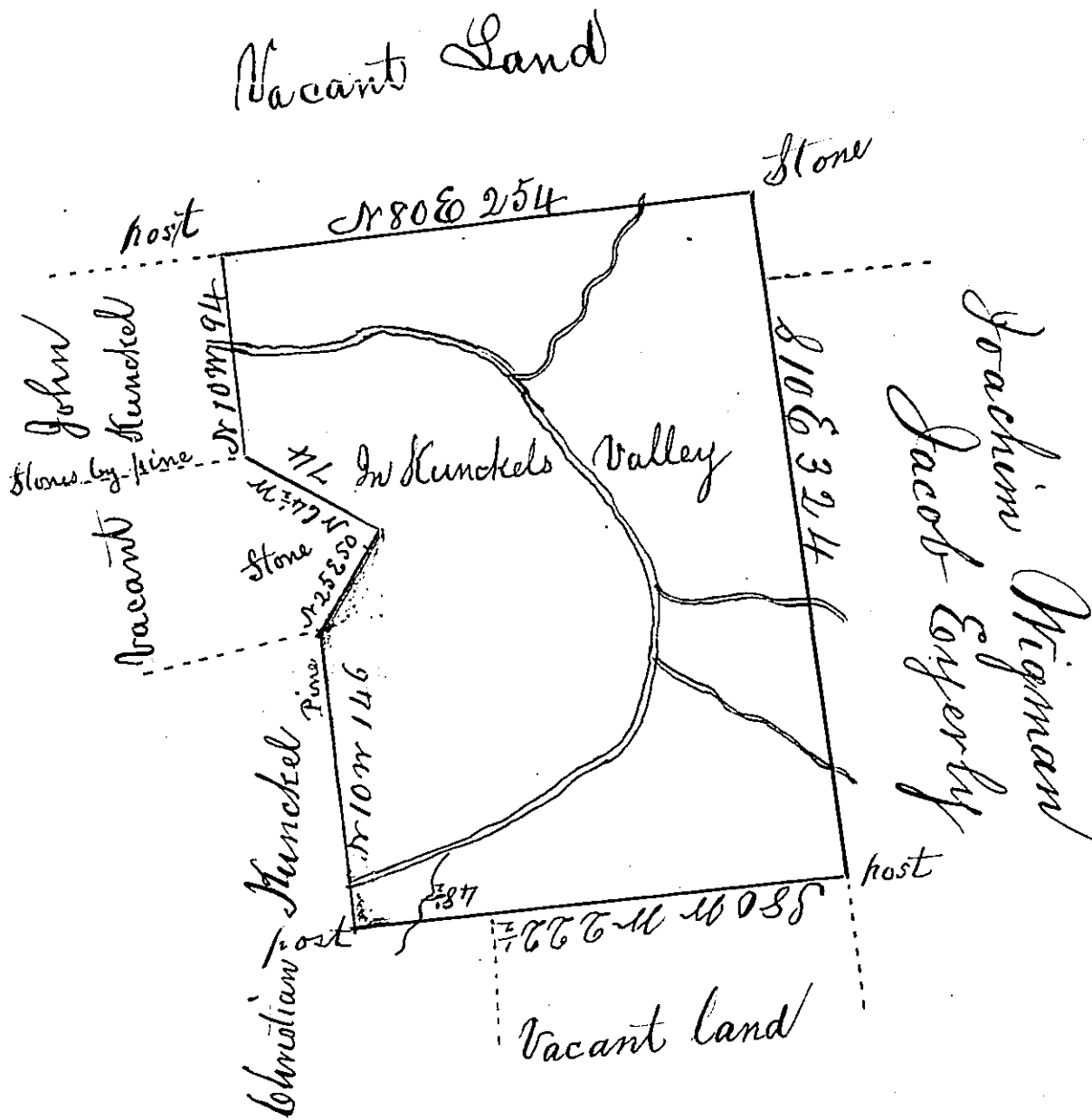


Hazle
Luzerne



By virtue of a warrant dated the 5th of February 1789 surveyed the 19th July 1791 to Mary Kunkel the above described tract of land, situate on a branch of Black creek in Northampton or Northumberland county, containing four hundred and thirty nine acres fifty Perches and the and the allowance of six p. cent. by a

Daniel Brodhead Esqr
Surveyor General

J. Geo Palmer

(called
Pleasant Meadow)

The division line between Eyerly & Kunkel run agreeable to an agreement between them.

J. Palmer

IN TESTIMONY that the above is a copy of the original remaining on file in the Department of Internal Affairs of Pennsylvania, made conformably to an Act of Assembly approved the 16th day of February, 1833, I have hereunto set my Hand and caused the Seal of said Department to be affixed at Harrisburg, this

Fourth day of October 1833.

J. Simpson Africa,
Secretary of Internal Affairs